



www.villa.sk

villa@villa.sk

VILLA s.r.o., Sabinovská 14, 821 02 Bratislava

zapísaná v OR OS Bratislava 1, v odd. Sro, vo vložke č. 27397/B

IČO: 35 844 221 IČ DPH: SK2021685897 DIČ: 2021685897

Bankové spojenie: TATRA BANKA, A.S. Číslo účtu: 262 573 0774/1100

V prípade otázok a objednávok prosím volajte: Ing. Marcel Sedláček

mobil: 0905 661256, tel. +421 2 33004017, email: villa@villa.sk

OTS 800 Series (Omni Total Station)



OTS 800 Series Reflectorless Total Stations!

There are several new features in the OTS 800 Series:

- * 32-CPU for high speed operation.
- * Capacity to 10,000 points.
- * Lighting function display more clearly.
- * Six lines high-resolution large-screen display.
- * Function keys affords for fast and precise measuring.
- * New encoding technology eliminates manual initialization.
- * State of the art Optical Mechanical and Electronic Design.
- * Reflectorless Range: 200m (without prism) 4.0km With 1 prism.

Specifications:

Model #	OTS-852	OTS-852-R	OTS-855	OTS-855-R
Telescope Image	Erect			
Magnification	30x			
Effective Aperture	45mm			
Resolving Power	3"			

Field of View	1°30'			
Minimum Focus	1m			
Distance Measurement: (under fair conditions)				
1P	2.00km	2.00km	2.00km	2.00km
3P	3.00km	3.00km	3.00km	3.00km
w/out Prism	N/A	200M	N/A	200M
Accuracy	2mm+2ppmxD		3mm+2ppmxD	
Minimum Count	1mm			
Distance Unit	Ft. or Meter (selectable)			
Measuring Speed				
Fine	1.8 sec			
Tracking	0.7 sec			
Maximum Display	999999.999m			
Atmospheric Correction	Manual Input, Auto Correction			
Temperature	C° or F°			
Atmospheric Pressure	Manual Input, Auto Correction			
Atmospheric Deflection and Earth Curvature Correction	On(k=0.14/0.20) Off			
Prism Constant	0mm/30mm			
Angle Measurement				
Measurement Method	Absolute Encoder			
Accuracy	2"	5"		
Minimum Reading	1"/5"/10"			
Vial Sensitivity				
Plate Vial	30"/2mm			
Circular Vial	8'/2mm			
Vertical Tilt Sensor	Available			
Type	Electronic			
Compensation Range	+/-3'			

Resolution	1"
Optical Plummet	
Image	Erect
Magnification	3x
Focus Range	0.5m - Infinity
Display	Dual Side LCD
Data Port	RS-232
Memory Points	10,000
Working Temperature	~20°-50° C
Power Supply	Rechargeable Batteries
Battery Life	~8 hours
Dimensions	160x150x330mm
Weight	6 Kg

OTS 900 Series (Omni Total Station)



OTS 900 Total Station Series!

There are several new features in the OTS 800 Series:

- *Fast speed distance measurement
- *Extended internal memory
- *High accuracy and long distance measuring range
- *Complete application programs
- *Convenient data management systems
- *Extended battery life
- *Reflectorless available!

Specifications:

Model #	OTS-902-E	OTS-902	OTS-905	OTS-905-R
Telescope Image	Erect			
Magnification	30x			
Effective Aperture	45mm			
Resolving Power	4"			
Field of View	1°30'			
Minimum Focus	1.5 m			
Distance Measurement: (under fair conditions)				
1P	2.00km	1.30km	1.30km	1.30km
3P	3.00km	2.00km	2.00km	2.00km
w/out Prism	N/A	N/A	N/A	150m
Accuracy	2mm+2ppmxD		3mm+2ppmxD	
Minimum Count	1mm			
Distance Unit	Ft. or Meter (selectable)			
Measuring Speed				

Fine	1.8 sec
Tracking	0.4 sec
Maximum Display	999999.999m
Atmospheric Correction	Manual Input, Auto Correction
Temperature	C° or F°
Atmospheric Pressure	Manual Input, Auto Correction
Atmospheric Deflection and Earth Curvature Correction	On(k=0.14/0.20) Off
Prism Constant	0mm/30mm
Angle Measurement	
Measurement Method	Incremental Photo-Electronic Encoder
Accuracy	2" 5"
Minimum Reading	1"/5"/10"
Vial Sensitivity	
Plate Vial	30"/2mm
Circular Vial	8'/2mm
Vertical Tilt Sensor	Available
Type	Electronic
Compensation Range	+/-3'
Resolution	1"
Optical Plummet	
Image	Erect
Magnification	3x
Focus Range	0.5m - Infinity
Display	Dual Side LCD
Data Port	RS-232
Memory Points	50,000
Working Temperature	~20°-50° C
Power Supply	Rechargeable Batteries

Battery Life	~8 hours
Dimensions	160x150x330mm
Weight	6 Kg

5900 Series Theodolite

New! OMNI #5900 Digital Theodolite Series

Features:

- • Incremental code system
- • Two sided of LCD display
- • High integrated electronic boards and High Quality ICX elements
- • Independent tilt sensor with auto correct feature.
- • Water resistant sealed telescope is provided.
- • Coaxial clamp and tangent screws are provided.
- • International common function modes are standard
- • Designed to be compatible with most EDM models to form Total Station capability

[Full Specifications >>](#)



5900 Series Theodolite

Model	5900-02	5900-05	5900-10
Telescope			
Length	165mm	165mm	165mm
Objective lens aperture	45mm	45mm	45mm
Magnification	30X	30X	30X
Image	Erect	Erect	Erect
Field of view	1°30'	1°30'	1°30'
Resolving power	3.3"	3.3"	3.3"
Shortest sighting distance	1m	1m	1m
Additive constant	0	0	0
Stadia proportion constant	100	100	100
Angle measurement			
Minimum reading	1"/5"	1"/5"/10"	1"/5"/10"/20"
Accuracy	2"	5"	10"
Display			
Display method	Double sides display	Double sides display	One side
Illumination	Provided	Provided	Provided
Compensator			
Tilt sensor	A provided	A provided B unprovided	B unprovided
Compensating range	±3'	±3'	-
Optical plummet			
Magnification	3X	3X	3X
Field of view	5°	5°	5°
Focusing rang	0.5m~∞	0.5m~∞	0.5m~∞
Level sensitivity			
Plate level	30"/2mm	30"/2mm	30"/2mm
Circular level	8'/2mm	8'/2mm	8'/2mm
Data output			
Output interface	RS232C	RS232C	RS232C
Power supply			
Battery	Four XAAsize batteries	Four XAAsize batteries	Four XAAsize batteries
Rechargeable battery	Option	Option	Option
Battery working time	10~20hours	10~20hours	10~20hours

Others			
Waterproof class	IP45	IP45	IP45
Tribrach type	Datachable	Datachable	Fixed
Working temperature range	-20°C~ +50°C	-20°C~ +50°C	-20°C~ +50°C
Dimension	150×165×335	150×165×335	150×165×335
Weight	5kg	5kg	5kg

NA Leica Style Auto Level Series



New! OMNI #NA Series "Leica Style" Automatic Level

- NA Series: This new Level is lightweight, rugged and
 - incorporates the latest features in air-dampened technology.
 - The now easy-to-grip styling provides fast and easy set up,
 - accurate leveling and will provide years of trouble-free use.
 - Best of all since this our most price competitively Auto Level
- Series. Includes carrying case, adjustable pin, allen wrench,
 - plumb bob, and instruction manual.
 - Powers available 20x, 24x, 28x, and 32x.

Specifications:

Item no.:	NA20	NA24	NA28	NA32
Magnification:	20X	24X	28X	32X
Standard deviation for 1km:	2.5mm	2.0mm	1.5mm	1.0mm
Double run leveling Objective Aperture:	38mm	38mm	38mm	38mm
Field of View:	1° 20'			
Shortest Focus Distance:	0.3m	0.3m	0.3m	0.3m
Compensator type:	wire-hung and air-damping			
Working range of compensator:	±15'			
Levelling accuracy:	±0.5"			
Circular vial:	8'/2mm			
Horizontal circle:	360° or 400G for option.			
Weight:	4kg			
Standard outfit:	Auto Level, plumb bob, adjusting screw, instruction manual, plastic carrying case.			

Sliding Mini Prism Pole Set



This 25mm silver coated prism comes in a 0mm offset aluminum holder.

This versatile assembly not only slides up and down the length of the the four 1 ft section, but is also tilt capable.

Each of the four 1 ft pole sections has a 1/2 mark for accurate positioning.

Assembly comes complete with a 5/8 x 11 adapter for compatibility with any pole or tribrach adapter.

Topped with a 40 minute vial and dual action sighting cones that lock the assembly in place.

Item # 1960

25mm Sliding Mini Prism/Pole Set



Featuring an easy slide system, the assembly knobs lock the prism in the desired height and tilt.

The silver coated 25mm prism comes in a 0mm offset holder.

Includes (3) 60cm pole sections, with 10cm color divisions for a total 1.8m height achievement.

Complete with a 40 minute circular vial and case for the entire kit. Plumb bob hook, cone and replaceable stainless steel point also included.

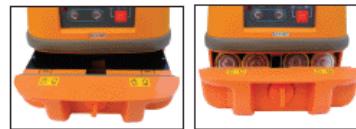
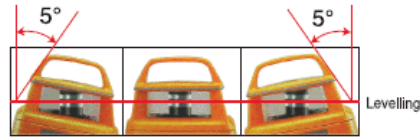
Item # 1950

Accupoint SP50

Features:



- Equipped with high quality and accurate 3 axis electronic sensor.
- Extremely quick automatic self-levelling for horizontal and vertical working.
- Auto mode/Manual mode for option, Simple slope function can be set up under Manual mode.
- When vertical working, the laser line can be moved forward and backward.
- With rotating, spot and scan function for option and speed can be changed.
- With self-checking and self-calibration function for user's convenience. High accuracy/Low accuracy can be switched for different usage.
- With 90° plumb laser beam.
- Fitted with remote control to control most functions on the laser.



Rechargeable batteries

4xAA batteries



Remote control

LS-θ Detector

Specifications:

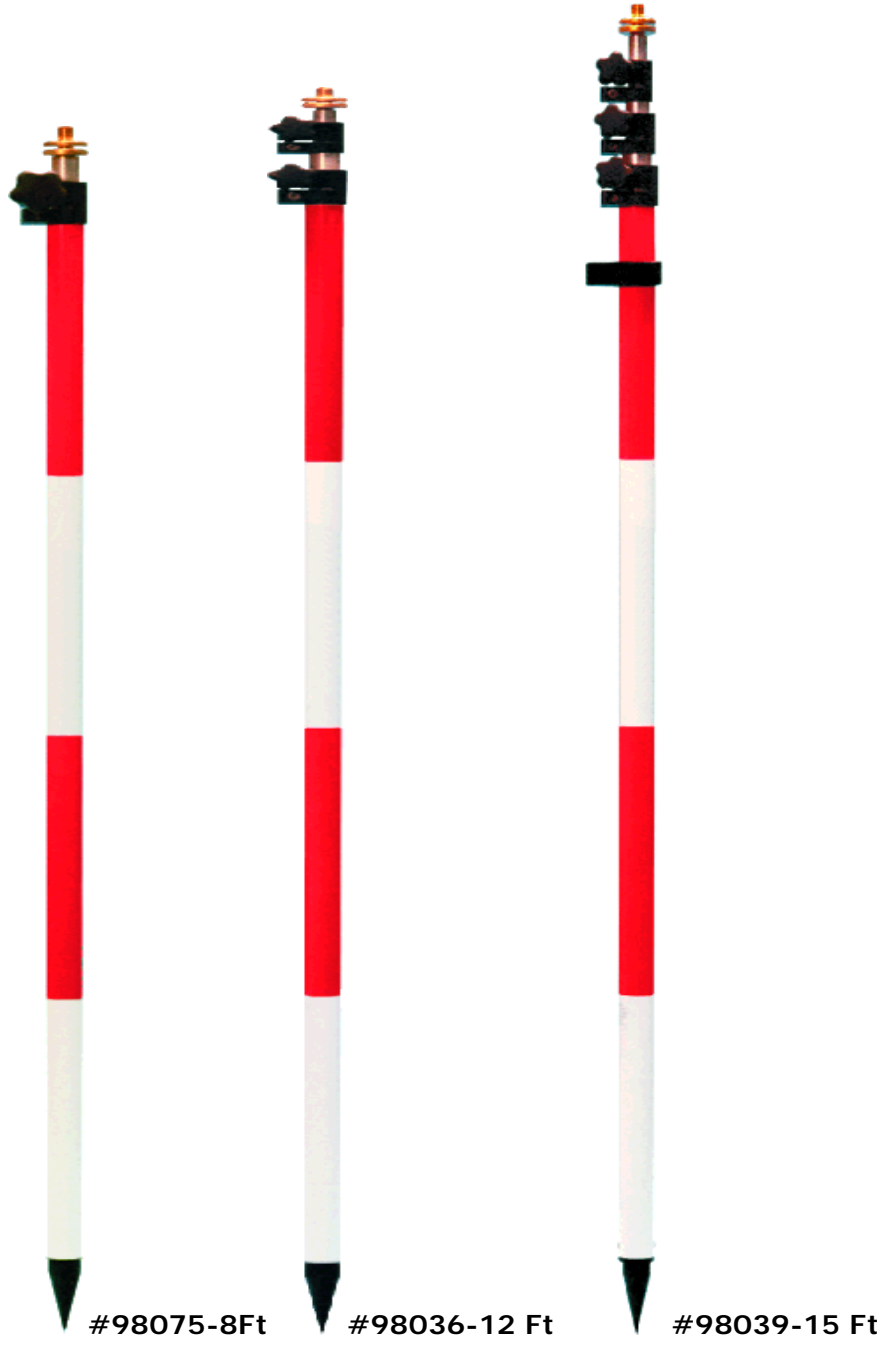
Automatic levelling range:	±5°
Slope(Y-axis):	±5°
Accuracy (horizontal):	±10"
Vertical:	±20"
Operating range with detector:	±200m
Rotating (without detector):	approx.20m(depending on room illumination)
Spotting (with out detector):	approx.50m
Scanning (with out detector):	approx.30m
Remote control range:	30m(with infra-red) ,80m(with RF)
Rotation speed:	0/5/200/420rpm right/left turn
Scanning-function:	3 steps
Operating time:	40h with D type batteried/10h with rechargeable batteries Option
Power supply:	4X1.5V D type/5X1.2V Ni-H Option
Working range:	-10°C~ +50°C

Laser diode:	635nm
Laser class:	Class II
Tripod attaching screw:	5/8"X11 thread
Water proof:	IPX6
Weight:	2.5kg

Advanced Prism Pole Series



Our new advanced prism pole series are made from the finest materials available. This high quality prism pole series includes silver inner poles with permanent black inner graduations, brass hybrid tips, aircraft quality precision machined aluminum components, and electrostatically powder painted. Available with Omni TwissLoc, Posiloc, and Compression Locking systems.



Advanced Series!

Snap Lock Rover Rods



Our new Carbon Fiber Quick Snap Lock Rover Rod features a new one-piece design. It's perfect for all GPS RTK surveys.

You will find that saves time (compared to the older two-piece, thread-together rods).

The rod telescopes and locks at 2 meters and collapses to 1.354 meters.

Two locking systems are available on the rod: the snap lock which guarantees no slipping and the compression lock which centers the telescoping inner and maintains straightness.



Includes a 40-minute adjustable circular vial.

Wt. 1.60 lb (0.73 kg)

Item #37023 Aluminum Model

Item #37024 Carbon Fiber Model

Radio Aetenna Mast Assembly



Omni's Antenna Mast Assembly will fit most heavy-duty-type tripods after the bolt assembly has been removed.

The mast telescopes to 7.5 ft (2.3 m) (plus your tripod height for maximum height).

It's easy to install, a hex tool is included.
Convert your extra tripods to a radio base set-up!

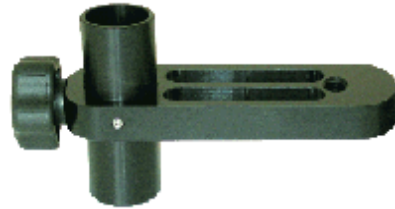
Wt. 2.5 lb (1.13 kg)

Item #37032

Antenna Brackets and Masts

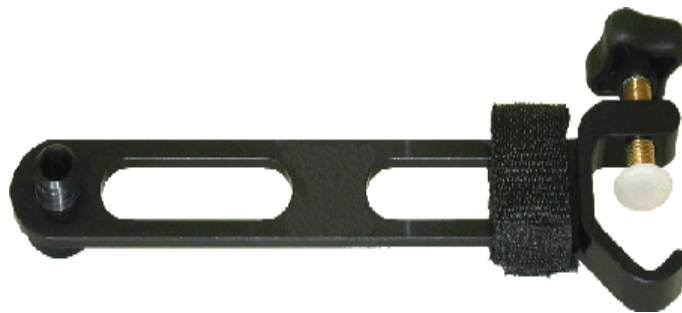


Antenna Bracket



Antenna Mast Bracket

Radio Aetenna Mast Clamp



The open clamp attachment allows quick and easy connection to the pole and will connect to 19- and 32-mm diameter poles. The brass male 5/8 x 11 stud

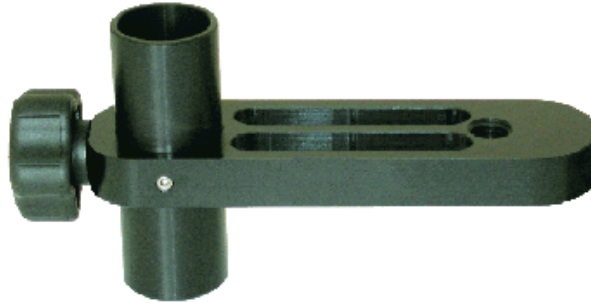
can easily removed for direct attachment of the radio antenna to the bar. The bracket comes with a non-slip Velcro Cable Strap to help manage the radio cable.

Item #37030 can be used with (#37030-03) Radio Antenna Adapter which adapts 1-1/8-18 radio antennas to any 5/8 x 11 threaded tip.

Weights 0.22 lb (0.10 kg)

Item #37030

Antenna Mast Bracket



This bracket allows assembly of sections of standard diameter poles to obtain the desired height above ground of the GPS or radio antenna.

It works with any standard 5/8 x 11 tripod and any pole

sections 1- to 1.25-inch (25- to 32-mm) O.D.

You can easily plumb over the point when needed for elevating a GPS antenna through the canopy.

Easy and controlled setups are achieved by lifting one section at a time up through the bracket. Six-to-seven meters height is stable when using 1.25-inch sections. For windy conditions or higher setups a plate for attaching guy wires can be used.

Weights 0.95 lb (0.42 kg)

Item #37031

Data Collector Cradle and Clamps



Quick Release Data Collector Cradle



Quick Release Clamp



Ball and Socket Combo



Ball and Socket Cradle



Ball and Socket Clamp



Ball and Socket Link



Tripod Mount

Quick Release Data Collector Cradle



Our new design fits the body of a collector/controller snugly, comfortable locking on the bottom of the cradle.

The new 'anti-crush' feature that locks up the cradle when tight, but is limited — the risk of damaging controller is greatly reduced.

These new cradles are constructed of corrosion-resistant anodized aluminum and the stainless steel clamp screws feature non-jamming coarse threads for easy open and close use.

Our Quick-Release Pole Clamp (37016-XX) has the same features as the cradle; it cannot crush the pole and the stainless steel clamp's screw threads are coarse for fast opening and closing. The cradle can be used with "Open" Pole Clamps.

Designed for use with 1.25-inch (32-mm) diameter pole only.

Item #	Cradle designed for:
37015-10	TSC2™, Ranger™ 300x, 500x
37015-11	Allegro, Jet ce, Explorer, Tracker
37015-12	Recon®
37015-13	FC-100, MMCE
37015-14	FC-1000, FC-2000
37015-15	GMS-2
37015-16	Archer
37015-17	GeoCE, XH, XT, XM
37015-18	Workabout Pro

Quick Release Clamp



Designed for use with 1.25-inch (32-mm) diameter pole only.

Item #	Features (with ram ball – for 1 1/4" Dia Pole)
37016-20	Plain unit (as shown)
37016-21	With 40 minute vial
37016-22	With 20 minute vial
37016-23	With 8 minute vial
37016-24	With compass only
37016-25	With compass and 40 min vial

Ball and Socket Data Collector Combo



Item #

Combo Designed For:

37019-10	TSC2™, Ranger™ 300x, 500x
37019-11	Allegro, Jet ce, Explorer, Tracker
37019-12	Recon®
37019-13	FC-100, MMCE
37019-14	FC-1000, FC-2000
37019-15	GMS-2
37019-16	Archer
37019-17	GeoCE, XH, XT, XM
37019-18	Workabout Pro

Ball and Socket Data

Collector Cradle



Our new design fits the body of a collector/controller snugly, comfortable locking on the bottom of the cradle.

The new 'anti-crush' feature that locks up the cradle when tight, but is limited — the risk of damaging controller is greatly reduced.

These new cradles are constructed of corrosion-

resistant anodized aluminum and the stainless steel clamp screws feature non-jamming coarse threads for easy open and close use. Our Quick-Release Pole Clamp (37016-XX) has the same features as the cradle; it cannot crush the pole and the stainless steel clamp's screw threads are coarse for fast opening and closing. The cradle can be used with "Open" Pole Clamps.

Designed for use with 1.25-inch (32-mm) diameter pole only.

Item #

Cradle Designed For:

37017-10	TSC2™, Ranger™ 300x, 500x
37017-11	Allegro, Jet ce, Explorer, Tracker
37017-12	Recon®
37017-13	FC-100, MMCE
37017-14	FC-1000, FC-2000
37017-15	GMS-2
37017-16	Archer
37017-17	GeoCE, XH, XT, XM
37017-18	Workabout Pro

Ball and Socket Data Collector Combo



Designed for use with 1.25-inch (32-mm) diameter pole only.

Item #

Combo Designed For:

37018-20	Plain unit (as shown)
37018-21	With 40 minute vial
37018-22	With 20 minute vial
37018-23	With 8 minute vial
37018-24	With compass only
37018-25	With compass and 40 min vial

Ball and Socket Link



Item # Designed for use with #37018
and #37019 Series

37000-10

Tripod Mount



Item #
#37000-10

Designed for use with

37000-20

Hand Levels



Omni 23080



Omni 23085



Omni 23040



Omni 23090

Omni 23080



The Omni 23080 is 6.5" long (16.5cm) and is a 1x hand level.

The featured scales are:

- 1.) Degrees
- 2.) Percent
- 3.) Topo
- 4.) Chainage Correction

Comes with case!

Item #23080

Omni 23085



The Omni 23085 is 8" long (20cm) and is a 5x hand level.

The featured scales are:

- 1.) Degrees
- 2.) Percent

It also comes also comes with adjustable objective and eyepiece.

Stadia lines ratio = 1 : 1000

Comes with case!

Item #23085

Omni 23040



The Omni 23040 is 8" long (20cm) and is a

5x hand level.

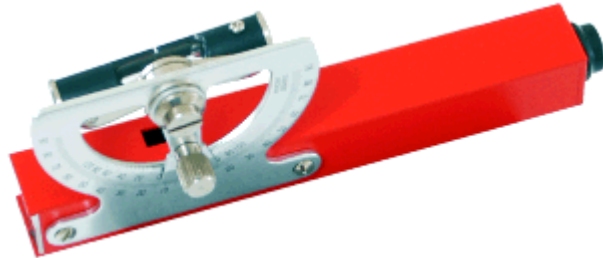
It also comes also comes with adjustable objective and eyepiece.

Stadia lines ratio = 1 : 1000

Comes with case!

Item #23040

Omni 23090



Ideal for preliminary measurements, this Abney hand level can determine angle, slope and grade percentage.

Comes with case!

Item #23090

GPS Backpacks



Jumbo GIS/GPS Backpack



Compact GIS Backpack



GPS Backpack w/Frame

Jumbo GIS Backpack



Designed for comfort, this cool mesh backpack is the perfect way to transport your GIS instruments. Foam back pad for additional comfort. Rain resistant flat and built in pocket for your CamelBak.

Featuring internal, adjustable pockets, shoulder straps and belt. 20 x 9.5 x 4 inches of room inside. Made of Heavy Duty polyester.

*Also available with Cam Lock Antenna Pole

Item # 30030-10

Compact GIS Backpack



Complete with adjustable straps, interior pockets, belt straps, rain flap and cam-lock antenna pole, this versatile backpack is everything you need from a GIS backpack.

Cam-Lock antenna pole extends to 36.5 inches and retracts to 16.5 inches.

Interior space: 15 x 9 x 4 inches

Item # 30030-20

GPS Backpack w/Frame



This complete GPS Backpack features internal pockets, 4 egress openings for cables and 4 straps. Also comes with adjustable pockets in 3 different sizes.

Topped off with a top of the line heavy duty aluminum frame. Twist locks fix antenna pole extensions in place.

Interior space: 17.5 x 14.75 x 3.75 inches

Item # 30030-30

1740-10 Elevator Tripod

1740-10 Elevator Tripod

- Two section elevator column design,one section with worm gear and shaft structure to adjust up and down,another section can be pull out to reach maximum height with quicd clamp system.
- Chains between legs to prevent legs from sliding.
- Closed length: 128cm opened length: 330cm
- Weight: 8.5kg.



Safety Light Solutions

Lite Tracker 2008

New! OMNI #LITE TRACKER



A bright flashing visual indicator that allows instant recognition. The Lite Tracker utilizes a proprietary light multiplying principle that offers high visibility from all directions up to one mile.

Model 2008

Red Lens with
3 Red LEDs.
That Glow, Flash and Strobe.

An omni directional luminary, solid state LED light in a High Impact plastic case. Comes with a handy Belt Clip on back of case.
Approx. Size: **ONLY** 1-3/4" wide by 2-3/4" High x 1-1/2" Deep.
Approx. Wt. 3.5 oz. with two included 1.5 Volt AAA Alkaline batteries

Glow Baton 100



TRAFFIC MASTER GLOW BATON 100

Multi Function. Great for Traffic and Crowd Control. Has a Bright Red LED that will Glow, Flash or Strobe.

Approx. Size: Large 6-1/2" by 1-1/2" Diam.
by 360 Degrees of luminary surface, 13-1/2" overall.

Wt.: 9 oz. with two 1.5 volt AA included alkaline batteries

Lite Tracker 2009

New! OMNI #LITE TRACKER



A bright flashing visual indicator that allows instant recognition. The Lite Tracker utilizes a proprietary light multiplying principle that offers high visibility from all directions up to one mile.

Model 2009

Green Lens with
3 Amber LED.
You can select

Glow, Flash or Strobe.

An omni directional luminary, solid state LED light in a High Impact plastic case. Comes with a handy Belt Clip on back of case.

Approx. Size: **ONLY** 1-3/4" wide by 2-3/4" High x 1-1/2" Deep.

Approx. Wt. 3.5 oz. with two included 1.5 Volt AAA Alkaline batteries

Glow Baton 400



TRAFFIC MASTER GLOW BATON 400

Two Color Multi Function. Traffic and Crowd Controller. One Bright Red LED and One Green LED that will Glow, Flash or Strobe with the push of the button. Helps in safely directing vehicles around and out of emergency situations.

Approx. Size: Large 6-1/2" by 1-1/2" Diam.
by 360 Degrees of luminary surface, 13-1/2" overall.

Wt.: 9 oz. with two 1.5 volt AA included alkaline batteries.

Lite Tracker 2012

New! OMNI #LITE TRACKER



A bright flashing visual indicator that allows instant recognition. The Lite Tracker utilizes a proprietary light multiplying principle that offers high visibility from all directions up to one mile.

Model 2012

White Lens with
3 Green LEDs.

You can select

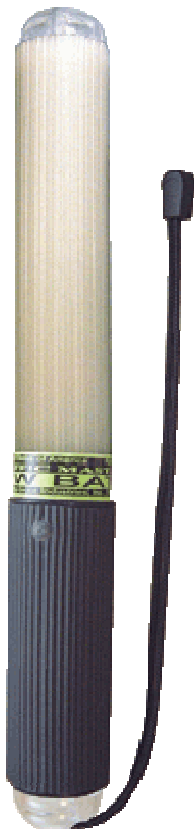
Glow, Flash or Strobe.

An omni directional luminary, solid state LED light in a High Impact plastic case. Comes with a handy Belt Clip on back of case.

Approx. Size: **ONLY** 1-3/4" wide by 2-3/4" High x 1-1/2" Deep.

Approx. Wt. 3.5 oz. with two included 1.5 Volt AAA Alkaline batteries

Glow Baton 500



TRAFFIC MASTER GLOW BATON 500 Three Colors

Multi Function Traffic and Crowd Controller. Changes from Bright Red LED to Green LED to Blue LED that will Glow, Flash or Strobe with a push of a button. Helps in safely directing vehicles around and out of emergency situations.

Approx. Size: Large 6-1/2" by 1-1/2" Diam.
by 360 Degrees of luminary surface, 13-1/2" overall.

Wt.: 9 oz. with two 1.5 volt AA included alkaline batteries.

Novinka #1775DC Masívny drevený statív (Duálne zaistenie nôh)

Tento statív je prakticky rovnaký ako #1765DC s výnimkou, že váži o 2,4 kg menej a cena je o 25% nižšia. Je to náš najpopulárnejší ťažký drevený statív.

